



# CHAMBER OF COMMERCE OF DOLENJSKA AND BELA KRAJINA

Franci Bratkovič

Novo mesto, 22. 9. 2011



# Slovenia

*At the heart of Europe – between the Alps, the Mediterranean sea, the Karst and the Pannonian plains.*

- Area: 20.273 km<sup>2</sup>
- Population: 2.057.650
- Triglav (2864 m high)
- Member of EU since 1. 5. 2004.
- Euro since 1. 1. 2007.
- Rich history, tourism and healthy economy.



I FEEL  
SLOVENIA



# Dolenjska and Bela krajina region

- Southeast part of Slovenia
- 1.689,6 km<sup>2</sup>, 110.943 inhabitants.
- Picturesque landscape:
  - vineyards,
  - castle Otočec,
  - thermal spa,
  - rivers Kolpa and Krka.
- Historical artefacts from 8. century BC.



**DOLENJSKA**  
BELA KRAJINA | KOČEVSKO-RIBNIŠKA

*Different discoveries*



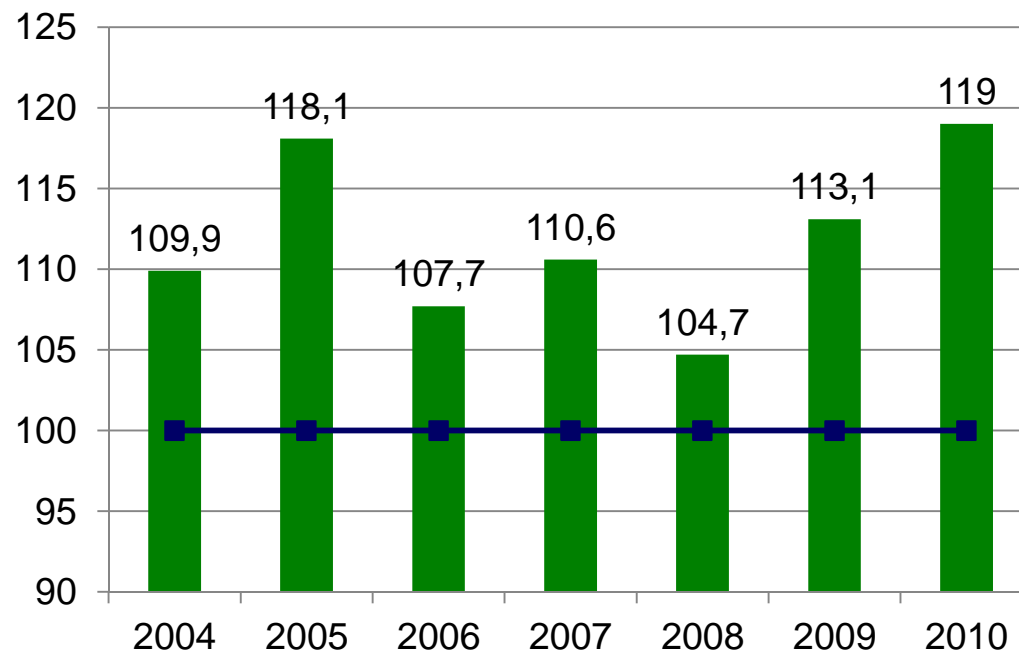
## Economy in 2010

<b>Important facts for Dolenjska and Bela krajina region and Slovenia</b>			
	<b>Region</b>	<b>Slovenia</b>	<b>Share</b>
No. of companies	1.830	55.734	3,3
Average no. of employees	23.697	462.643	5,1
Revenues in mio €	4.467	75.317	5,9
Value added in mio €	1.104	16.675	6,6
Revenues from export sales in mio €	2.964	21.890	13,5
Net profit in mio €	199	-256	
Share of revenues from export sales	64	29	220,7



# Economy in 2010

## REVENUES PER EMPLOYEE



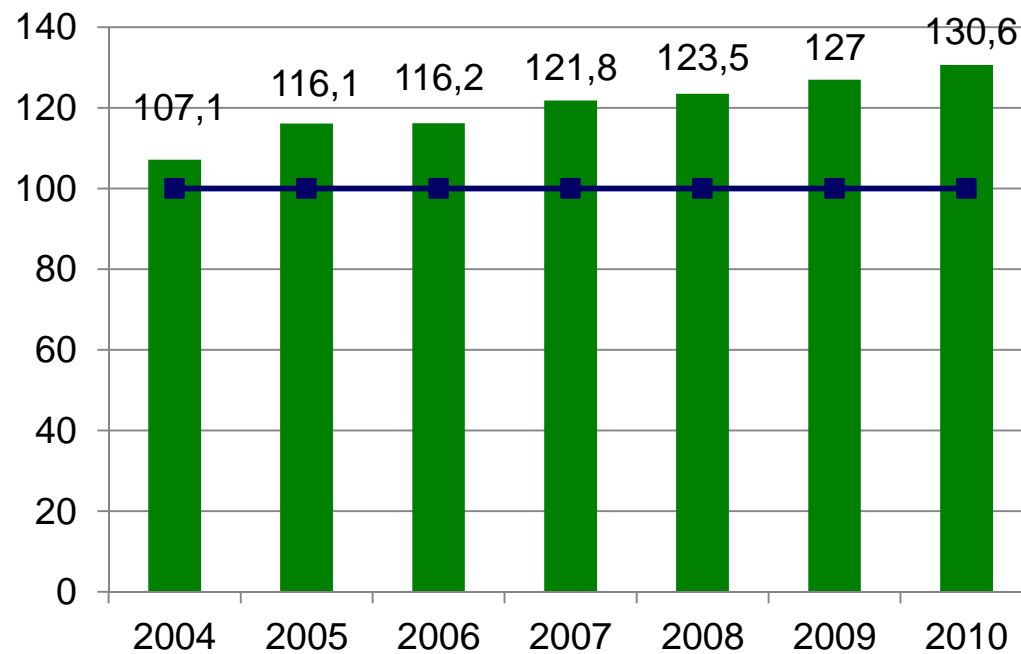
Region: 194.000 €  
Slovenia: 163.000 €

■ Dolenjska and Bela krajina  
■ Slovenia



# Economy in 2010

## ADDED VALUE PER EMPLOYEE



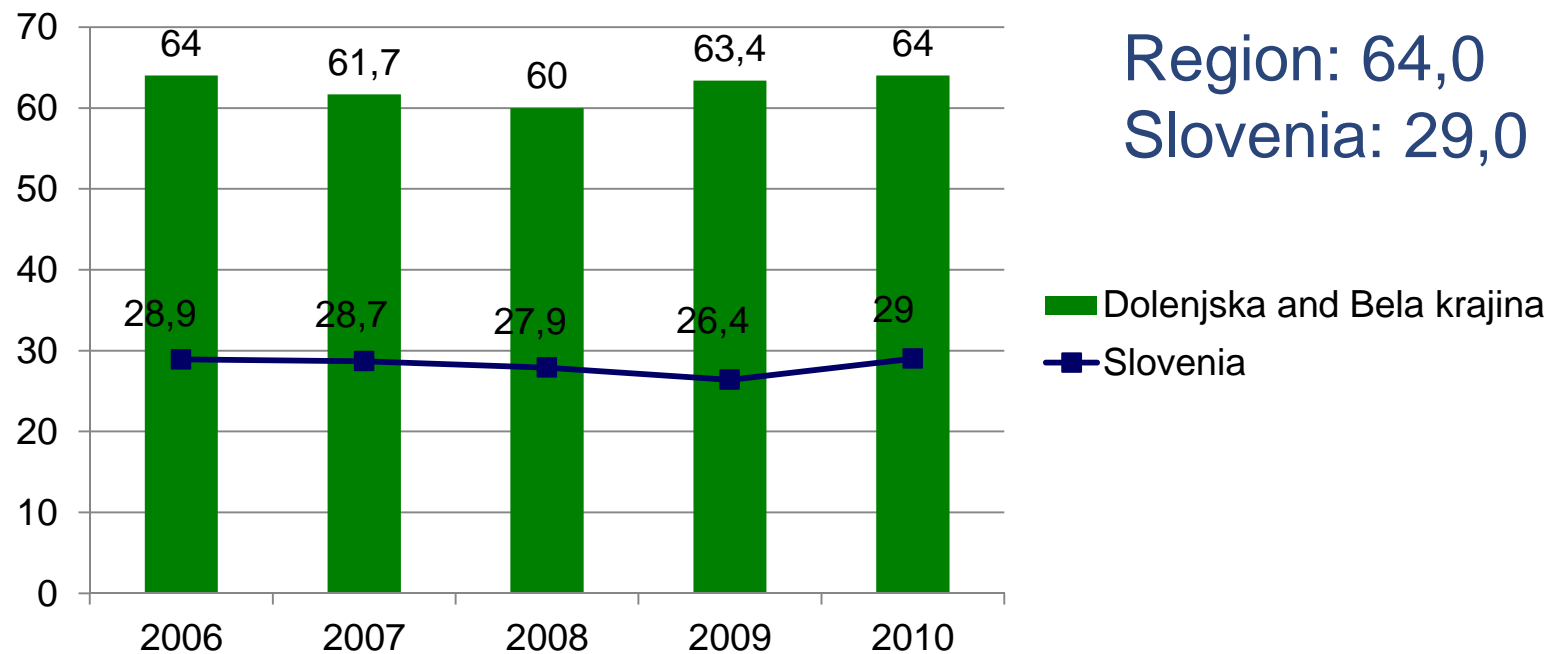
Region: 47.000 €  
Slovenia: 36.000 €

■ Dolenjska and Bela krajina  
■ Slovenia



# Economy in 2010

## SHARE OF REVENUES FROM EXPORT SALES





# Chamber of commerce of Dolenjska and Bela krajina

- First legally independent regional chamber of commerce (2007).
- 63 founder members, currently 354 members.
- Our members: 70 %, 80 %, 90 %.
- Education, sections, cooperation with regional and local institutions, consultancy, certifying documents, promotion of innovation, projects.







# Activities

- University of Novo mesto incentive
- Emphasis on technical studies and natural sciences
- School councils at all levels
- Shaping of educational programs
- Quality of education, international comparison and employment possibilities
- Internships
- Mentor qualification programme
- Project POT | Finding Young Talents



# Contact information

**Chamber of commerce of Dolenjska and Bela krajina**

**Gospodarska zbornica Dolenjske in Bele krajine**

Novi trg 11

SI-8000 Novo mesto

telephone + 386 (0) 7 33 22 182

fax + 386 (0) 7 33 22 187

e-mail [info@gzdbk.si](mailto:info@gzdbk.si)

website [www.gzdbk.si](http://www.gzdbk.si)